

82 Depot Street Dennis Port, MA



Centrally located on the Cape in Dennis Port, 82 Depot St. is a 3,200 sf home featuring 5 bedrooms and 4 ½ bathrooms that is available for short-term rental throughout the year. The home was built in 2018 and put into service in June 2018. It is situated on a ½ acre lot in a very desirable location, south of Lower County Road and close to beaches, downtown Dennis Port, restaurants, and many local attractions. Be one of the first families to enjoy this brand new, spacious and bright Cape-style home that is set back from the street and professionally landscaped. Perfect for multi-family vacations or family reunions!

Beaches

Located just 0.3 miles from Nantucket Sound, a 5 minute walk will bring you to Depot Street Beach. The Town of Dennis maintains 20 wonderful public beaches, several of which are within walking distance (Depot Street, Inman, Raycroft) or a very short drive (Sea Street, Glendon Road). West Dennis Beach is a beautiful beach that is about a 5 minute drive. Many folks with younger children prefer the Bay side beaches over the Ocean beaches. Fortunately, Dennis has two great Bay beaches.....Mayflower and Corporation beach are large beaches with lots of amenities (concessions, restrooms, rinse stations).

Ask the owner for a copy of the Town of Dennis Beach Map (.pdf format).

Bedrooms: There are 5 bedrooms.

1st Floor Master Suite with King Bed

This bedroom features a full bathroom with a 78" double vanity and custom tile shower. There is a wall-mounted 49" HDTV across from the bed and a 52" ceiling fan. This bedroom also has a walk-in closet. Cooling is provided by forced air A/C compressor; Heating is provided by forced hot air furnace.

2nd Floor Master Suite (over the garage) with King Bed

This bedroom features a full bathroom with a 69" double vanity, custom tile shower, and separate water closet. There is a wall-mounted 49" HDTV across from the bed and a 68" ceiling fan. There is a sleeper sofa with a memory foam mattress in this bedroom, appropriate for one adult or two children. This bedroom has one walk-in closet for your use. (A second walk-in closet is locked and is used by the owner for storage.) Cooling & Heating is provided by a wall-mounted Fujitsu mini-split heat pump, with remote control allowing you to individually manage your comfort.

2nd Floor Junior Suite (front of house)

This bedroom features a full bathroom with a 60" single vanity and custom tile shower. There is a wall-mounted 43" HDTV across from the bed and a 52" ceiling fan. Cooling & Heating is provided by a wall-mounted Fujitsu mini-split heat pump, with remote control allowing you to individually manage your comfort.

2nd Floor Queen + Bunk

2nd Floor Double Bunks

There are two large bedrooms on the 2nd floor; one has a queen bed and a bunk bed, the other has two 2 bunk beds. The bunk beds are **twin size** (76"L x 44"W), have full height rails (17") for safety, a ladder and have a firm 6" twin mattress. Each bedroom has a wall-mounted 49" HDTV and a closet. Cooling & Heating is provided by wall-mounted Fujitsu mini-split heat pumps, with remote control allowing you to individually manage your comfort. A full bathroom with a 78" double vanity and custom tile tub/shower services these two bedrooms.

All bedrooms:

- All King and Queen Mattresses are Simmons Beautyrest Luxury Firm with foundation
- Wall-to-wall carpeting
- Recessed Lighting
- Bed Side Table(s)
- Bed Quilt for each bed
- 4 Hypoallergenic Pillows, in zippered pillow protectors
- Mattresses are in a zippered mattress protector and covered with a mattress pad
- Clothes Hangers in closets
- Suitcase Stand with shelf
- Blankets can be found in the bedroom closets and/or the 2nd floor linen closet

All full bathrooms:

- Vanity with granite countertop; mirrors & lighting over vanity
- Tile Flooring
- Towel Bars, Hand Towel Bar, Robe Hooks
- Electric Heat (2nd floor full bathrooms)
- Blow Dryer

Living Areas:

You will initially enter the home through the front door on the farmer's porch. To your left is a family room area featuring a gas-fired, electronic ignition fireplace, a wall-mounted 55" HDTV over the fireplace, and a 52" ceiling fan. Furnishings include a leather sofa/chaise sectional, two arm chairs and 12' x 10' rug. To your right is a dining area with a 7' dining table that will accommodate 8 people on a 10' x 8' rug.

There is full wet-bar in the dining area featuring a deep 21" sink and beverage frig, which you will pass by as you enter the large galley-style kitchen.

The fully outfitted kitchen features a large 10' long bat-wing style island with 7 counter-height stools and pendant lighting. There is a walk-in pantry.

Appliances include:

- 27.8 cubic foot, French Door Refrigerator with water/ice on door (GE Profile)
- 36" Gas Cooktop with 5 burners, including Power Boiler Burner (GE Profile)
- 30" Double Electric Wall Ovens with convection (GE Profile)
- 30", 2.1 cubic foot Microwave over cooktop (GE Profile)
- Ultra-quiet Dishwasher (GE)
- 2 coffee makers (Mr. Coffee drip type)
- Pop-up style, 4 slice toaster

All counter-tops in the kitchen and wet-bar are granite, with under cabinet accent lighting. The kitchen is fully stocked with everything you will need during your stay (other than food!). An inventory of all items that are provided is included at the end of this fact sheet.

Enter the mudroom from the back of the kitchen. You are able to access the garage and the patio area/outside shower from the mudroom. Laundry appliances (LG 5.2 cu. ft. top load washer and LG 7.3 cu. ft. gas dryer) are located in the laundry closet in the mudroom. A powder room with vanity & toilet is adjacent to the mudroom.

Flooring throughout the 1st floor common areas is faux-wood ceramic tile (family, dining, kitchen) and porcelain tile (mudroom, powder room). Central A/C and forced hot air heating keep the 1st floor comfortable.

Outdoor Areas:

Relax in an Adirondack chair on the farmer's porch while watching your fellow vacationers head to the Beach. Or, enter the 3-season, screened porch through either the slider from the dining area or the French door from the kitchen. Each porch has composite decking. The screened porch is furnished with a counter-height dining table and 8 chairs, 2 wicker arm chairs and side table, and a 52" ceiling fan.

Exit the 3-season porch to the patio area located on the south side of the house. This large patio (36" x 18") is finished with Belgard pavers and features a stone fire-pit. A 3-burner propane Weber grill is available for your outside cooking needs. Eat at the picnic table and relax in the beach chairs that are provided by the owner (stored in the garage).

Follow the patio toward the back of the house to use the fully enclosed, outdoor shower.

For a little more privacy, enjoy the view from the 2nd floor roof deck that can be accessed from the hallway on the second floor. The roof deck is finished with composite decking and composite railing. The roof deck is furnished with lounge furniture and chairs for your comfort.

Other Features:

Xfinity Internet (200 mbps)

Xfinity High Definition TV (140 channels)

Automatic, natural gas fired Electrical Generator that will service the entire house when regular electrical service is interrupted (installed Sept 2019)

2 Car Garage available for your use, with remote openers

Play bocce, corn-hole, badminton, or volleyball in the oversized back yard (lawn games provided)

Various board games and puzzles provided, in case the weather isn't perfect!

There are 3 adult bikes in the garage (and I have plans to add 2 more for a total of 5)

Cross the street and enjoy breakfast at the famous Wee Packet restaurant!

Ocean House restaurant and Tiki Bar are a 5 minute walk South, at the end of Depot St.

Sundae School ice cream shop is a 2 minute walk from the house!

Oyster Bar raw bar is a 5 minute walk North on Depot St.

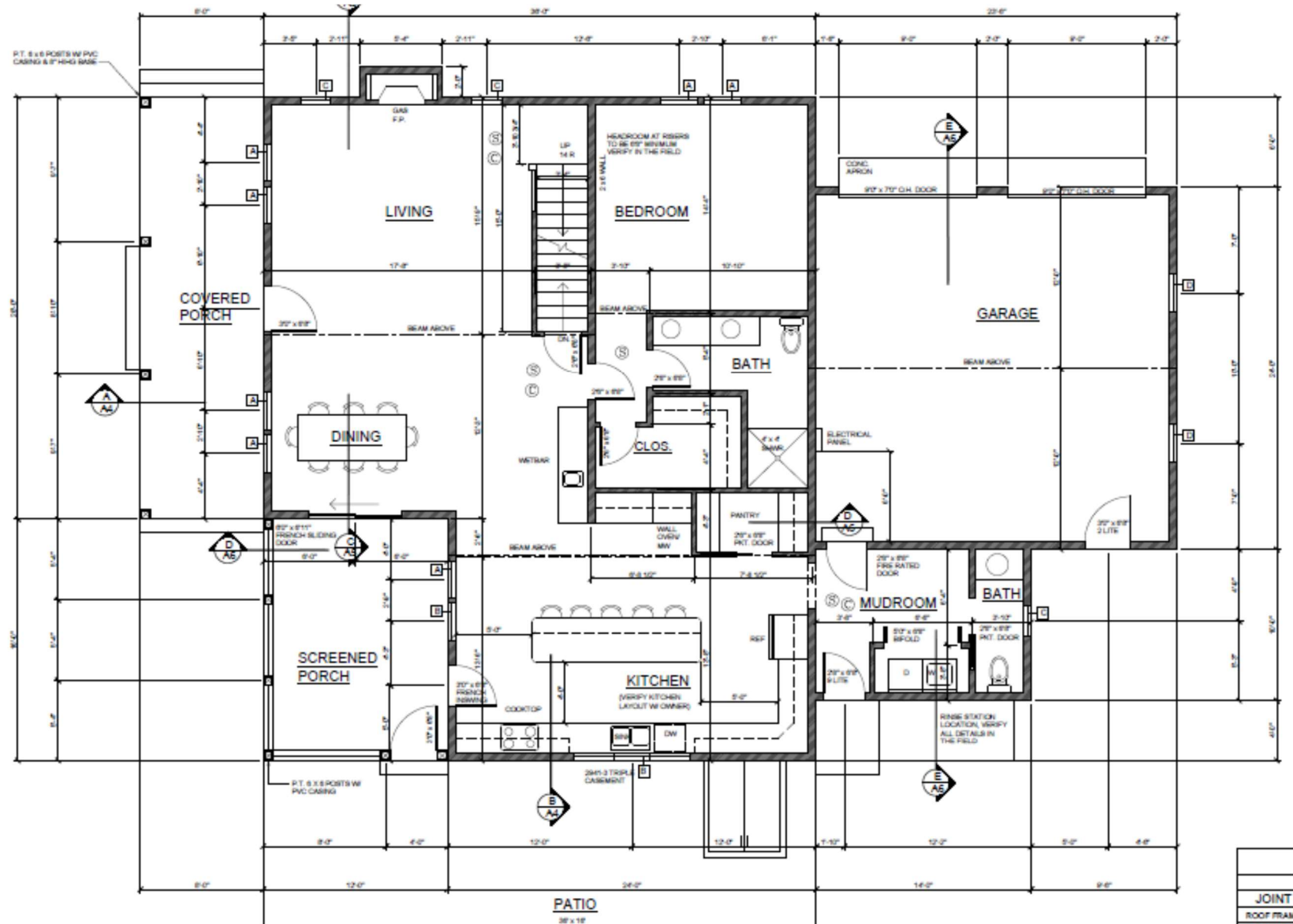
Kitchen Inventory

Kitchen - 82 Depot St., Dennis Port				
			Qty.	Notes
Large Appliances				
	Refrigerator		1	GE Profile, French Door, Slate
	Dishwasher		1	GE, Slate
	Dishwasher - Kit		1	GE, Install Kit, Adapter, 100v Cord
	Stove Top		1	GE Profile, Stainless, 36"
	Wall Ovens (2)		1	GE, Slate, 30" Double
	Microwave		1	GE Profile, Slate, 2.1 cu
	Microwave - Filler Kit		1	GE Profile, Slate filler kit for 30" Microwave
	Beverage Refrigerator		1	Frigidaire, 22" Stainless
	5 Year Protection Plan		1	Asurion, Refrigerator, Ovens, Dishwasher
	Washing Machine		1	LG, White, Top Loading, 5.2 cu.
	Clothes Dryer		1	LG, White, Gas, 7.3 cu.
	Nov Black Friday Promotion		1	Home Depot
Small Appliances				
	Drip Coffee Maker		2	Mr. Coffee, 12 cup drip brew
	Toaster		1	Black & Decker 4 slice, 7 settings
	Blender		1	Oster 2-in-1, Glass carafe with 20 oz. cup
	Electric Hand Mixer		1	Kitchen Aid, 5 speed
	Stick Vacuum		1	Dirt Devil Vibe 3-in-1
Cookware				
	Large Skillet, w/lid		1	Grand Chef, 14" round
	Medium Skillet		1	Calphalon, 12" round
	Small Skillet		1	Calphalon, 10" round
	Broiling/Roasting Pan		1	Farberware 12" x 16" with Rack, non stick
	Large Pot w/lid		1	Calphalon 10", 8 qt
	Extra Large Pot w/lid		1	For boiling lobsters
	Saucepan, w/lid		1	Calphalon, 2.0 qt
	Saucepan, w/lid		1	Calphalon, 4.5 qt
	Saucepan, w/lid		1	Calphalon, 6.0 qt
	Steamer		1	Denmark Stainless Steel 3-piece Cooker, 8 qt
	Casserole Dish, w/lid		1	oven-safe; glass or ceramic?
	Bake Pan, Oblong		1	David Burke 13" x 9" x 2.5" non stock
	Loaf Pan, Large		1	Calphalon, 5" x 10" non stock
	Muffin Pan		1	Calphalon, 12 Cup Muffin Pan
	Cookie Sheets		2	17" non stick, heavy gauge steel
	Cooling Rack		1	Calphalon 12" x 17", non stick
	Teakettle		1	MasterClass 2.6 qt., stainless steel
	Pizza Paddle		1	Mountain Woods Large Paddle 21.25" x 16"
	Mixing Bowls		1	Basic Essentials, set of 7 glass bowls
	Mixing Bowls		1	OXO Good Grips 3 piece set
	Strainers, set		1	Cuisinart, mesh, set of 3 (3", 5", 8")
	Collander		1	Nu Steel, 10" stainless steel
	Spoon Rest		1	Cook Pro
	Serving Platter, Large		1	White, Plastic - Rectangular 22"
	Serving Platter, Large		1	White, Plastic - Round 19"
	Serving Platter, Medium		1	White, Plastic - Round 16"
	Serving Bowls, Large		2	White, Plastic
	Serving Trays		2	Room Essentials, White Melamine
	Cook's Knives Set		1	Schmidt Bros. 7 piece set w/knife block
	Cooking Shears		1	Sharper Image, Multi-purpose non-stick
	Cooking Spoons		1	Core, Bamboo set of 6 assorted
	Water/Juice Pitcher		2	Large, Plastic

Kitchen - 82 Depot St., Dennis Port				
			Qty.	Notes
Other Items				
Dish Drainer w/tray			1	Metaltex, polytherm metallic 50 x 31 cm
Placemats			14	Au Natural, Cotton 13" x 10"
Dish Towels			8	Kitchen Aid, Cotton Terry cloth (4 sets x 2)
Dish Towels			6	Kitchen Aid, Cotton Terry cloth (3 sets x 2)
Coasters			20	Various types
Felt Pads				Felt Pads for chairs and furniture
Broom			1	OXO Good Grips Upright Sweep Set
Dust Pan			1	Casabella
Step Stool			1	Folding Step Stool, 14.5" x 11.9" x 12.9" H
Step Ladder			1	Samsonite, Steel 2-tier Step Ladder
Mop			1	
Garbage Bags				for in-counter waste-basket & recycling
Cleaner			1	bottle; non-ammonia based!!!
Sponges			3	
Paper Towels			2	rolls
Kitchenware/Utensils				
Measuring Spoons, set			1	Progressive, stainless steel 4 piece set
Measuring Cups			2	Pyrex, 2 cup, Glass
Measuring Cups, set			1	Jamie Oliver Stainless (1/4, 1/2, 3/4, 1 cup)
Cutting Boards			3	Sabatier 3 piece set, non slip
Cutting Boards			1	Catskill, non stick hygienic 14" x 20"
Whisk			1	Kitchen Aid, Stainless Steel Wire Whisk
Vegetable Peeler			1	OXO 2 piece set, stainless steel
Can Opener			1	Kitchen Aid, stainless steel easy crank
Bottle Opener			1	Kitchen Aid
Bottle Opener			1	True Zoo, Hammer in stainless steel
Wine Opener			1	Progressive, wing type corkscrew
Spatula			1	Oneida Silicone Spoon & Spatula Set
Spatula			2	Calphalon, Nylon Slotted Spatula
Salt & Pepper Shakers			1	Cole & Mason, Salt & Pepper Mills
Serving Bowls, set			1	6 piece, nested Bowl Set
Oven Mitts			1	Kitchen Aid, 2 pack set in black
Oven Mitts			2	Pantry, Neoprene in blue
Ice Cream Scoop			1	Kitchen Aid
Tongs, 16"			1	Sabatier, stainless steel
Tongs, 12"			1	Kitchen Aid, silicone tipped
Tongs, 12"			1	Kitchen Aid, Stainless Steel
Grater			1	Pizazz, 4 sided
Storage Jar, Large			1	Blue Harbor Collection, 72 oz glass
Storage Jar, Medium			1	Blue Harbor Collection, 30 oz glass
Silicone Trivets			4	Kitchen Pantry, silicone heat resistant
Paper Towel Holder			1	Nu Steel, stainless

Kitchen - 82 Depot St., Dennis Port				
			Qty.	Notes
Dinnerware/Glasses				
Dinner Plate, 10.5"		20		Bedford Lane by Gibson Home, White Ceramic
Dessert Plate, 7.5"		20		Bedford Lane by Gibson Home, White Ceramic
Dinner Bowl, 7"		20		Bedford Lane by Gibson Home, White Ceramic
Coffee Mug, 11 oz.		20		Bedford Lane by Gibson Home, White Ceramic
Wine Glasses, white		8		Libbey. 17 oz. stemless
Wine Glasses, red		20		Bon Boisson, 13 oz. stemware
Hi-ball/Whiskey Glasses		12		Krosnos, 6 oz glass
Juice Glass		12		Libbey, Monroe 11.2 oz. drinking glasses
Beverage Glass		24		Libbey, Monroe 15.9 oz. drinking glasses
Plastic Cups		12		for small kids?
Flatware				
Dinner Fork		16		Cuisinart Stainless Steel
Salad Fork		16		Cuisinart Stainless Steel
Teaspoon		16		Cuisinart Stainless Steel
Dinner Spoon		16		Cuisinart Stainless Steel
Dinner Knife		16		Cuisinart Stainless Steel
Serving Spoon		2		Cuisinart Stainless Steel
Serving Spoon, Slotted		2		Cuisinart Stainless Steel
Serving Fork		2		Cuisinart Stainless Steel
Butter Spreader		2		Cuisinart Stainless Steel
Sugar Shell		2		Cuisinart Stainless Steel
Steak Knives		12		Brandini Italian Style, Coltelli Bistecca
Serving Spoon		2		Oneida
Slotted Spoon		1		Oneida
Salad Spoon		1		Oneida
Cocktail Spreaders		6		Oneida
Lobster Crackers & Picks		6		Kitchen Pantry; 6 crackers + 12 picks

1st Floor Plan



2nd Floor Plan

